

Quick Exhaust Valve(QE)

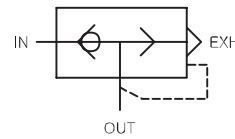
SICP

◆ SQE Series



SQE3000-03

● Symbol



● How to order

SQE 3 000 - 03

1 Quick Exhaust

2 Body Size
2 - 1/4
3 - 3/8
4 - 1/2

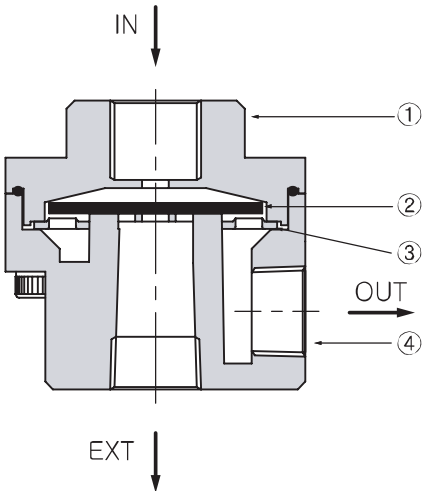
3 Port Size
02 - Rc(PT)1/4 "
03 - Rc(PT)3/8 "
04 - Rc(PT)1/2 "

● Specification

Fluid	Compressed Air
Max. supply pressure	1.5MPa [15.3 kgf/cm ²]
Max. operating pressure	0.97MPa [9.9 kgf/cm ²]
Ambient and media temperature	5 ~ 60 °C
Weight(g)	235

● STRUCTURE / PARTS

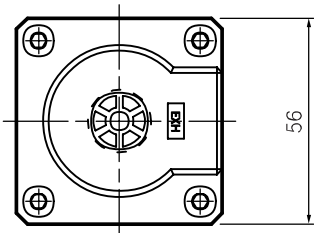
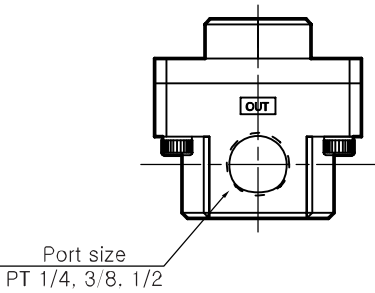
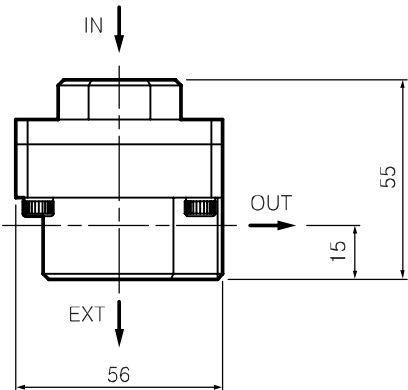
SQE 4000



No.	PARTS	MATERIAL
1	Cover	ALDC
2	Diaphragm	NBR
3	Plate	STEEL
4	Body	ALDC

● DIMENSIONS(mm)

SQE 4000



SQE