

2
Control equipment

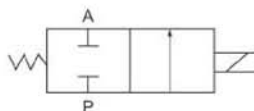
Solenoid valve SMF series (pulse valve)



SMF-Z-25P

SMF-Z-50P

Symbol:



How to order

SMF	-	Z	-	20P
Solenoid pulse valve		Right-angle type		Orifice size 20: 20mm 25: 25mm 35: 35mm 50: 50mm

Specification

Model	SMF-Z-20P	SMF-Z-25P	SMF-Z-35P	SMF-Z-50P
Operating pressure	0.3-0.8Mpa			
Ambient & fluid temperature	-5-60°C			
Relative humidity	< 80%			
Fluid	Clean Air			
Voltage	AC110V/AC220V/DC24V			
Diaphragm life	Over one million cycles			
Effective area (mm ²)	φ20	φ20	φ35	φ50
Port size	3/4"	1"	1 1/2"	2"
Weight (kg)				
Main parts material	Aluminum alloy			
Seal	NBR			

Dimension

