

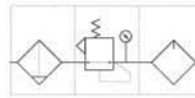
F.R.L unit A/B series (three-union)



AC2000

BC4000

Symbol:



1
Air
combination

How to order

AC	2000	M
F.R.L unit	Port size	Drain type
AC: AC series	1500: 1/8"	Nil: semi-automatic drain
BC: BC series	2000: 1/4"	M: manual drain
	3000: 3/8"	A: auto drain
	4000: 1/2"	

Specification

Model	AC1500 AC1500A AC1500M	AC2000 AC2000A AC2000M	BC2000 BC2000A BC2000M	BC3000 BC3000A BC3000M	BC4000 BC4000A BC4000M	
Component	Filter Regulator Lubricator	AF1500 AR1500 AL1500	AF2000 AR2000 AL2000	BF2000 BR2000 BL2000	BF3000 BR3000 BL3000	BF4000 BR4000 BL4000
Port size RC(PT)	1/8"	1/4"	1/4"	3/8"	1/2"	
Fluid	Air					
Proof pressure	15.0kgf/cm ²					
Max. operating pressure	0.95Mpa(9.5kgf/cm ²)					
Ambient & fluid temperature	5-60°C					
Nominal filtration rate	40µM					
Recommended lubrication	Turbine No.1 oil (ISO VG32)					
Adjustable pressure range	0.5-0.8kgf/cm ²					
Drain bowl capacity	15CC		60CC			
Oil bowl capacity	25CC		90CC			
Weight (kg)	0.7		0.9			
Main parts material	Body	Aluminum alloy				
	Bowl	PC				
	Bowl guard	AC1500~AC2000: without BC2000~BC4000: with (Plastic)				

Dimension

