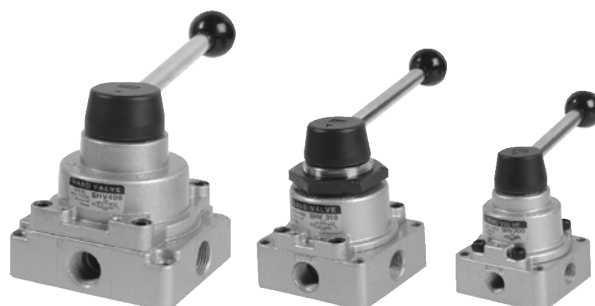


# Hand Valve(HV)



## ◆ SHV Series



SHV400-04

SHV310-03

SHV200-02

## ● How to order

**SHV 2 0 0 - 02**

① Hand Valve

② Body size

2 - 1/4

3 - 3/8

4 - 1/2

③ Piping and Mounting method

Mark	Piping	Mounting
0	Side	Body
1	Side	Panel

④ Position Symbol

0 - 3position (Closed center)

2 - 2position

⑤ Port Size

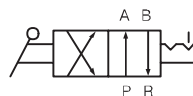
02 - Rc(PT)1/4 "

03 - Rc(PT)3/8 "

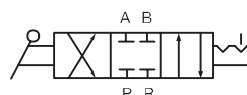
04 - Rc(PT)1/2 "

06 - Rc(PT)3/4 "

## ● Symbol



2 position



3 position Closed Center

## ● Specification

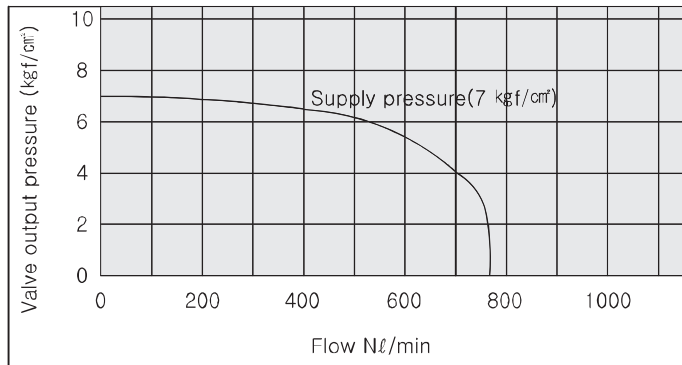
Fluid	Compressed Air
Max. supply pressure	1.5MPa [15.3 kgf/cm <sup>2</sup> ]
Max. operating pressure	0~0.97MPa [0~9.9 kgf/cm <sup>2</sup> ]
Ambient temperature	5 ~ 60℃
Operating angle	90°

## ● Precautions

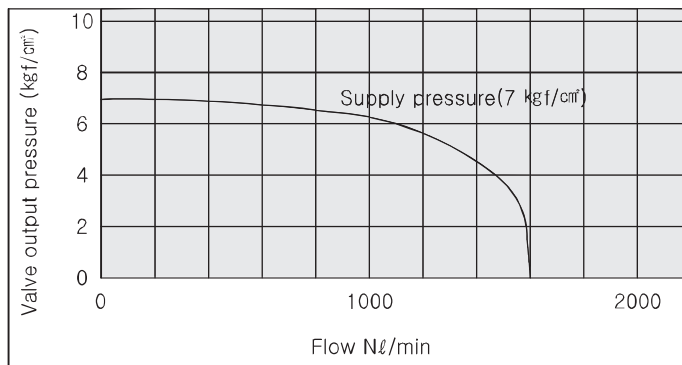
- ① P and R position can not be changed reciprocally when piping.  
( Valve plate can be detached )

## ● FLOW CHARACTERISTICS

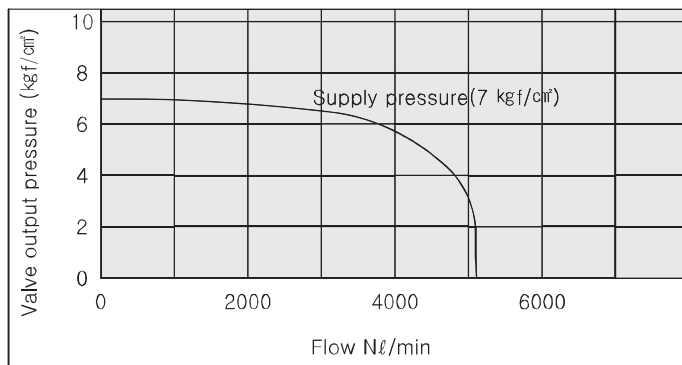
### SHV 200



### SHV 300

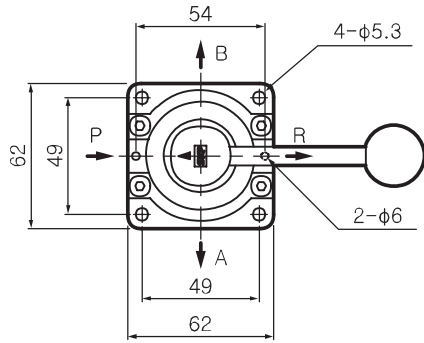


### SHV 400

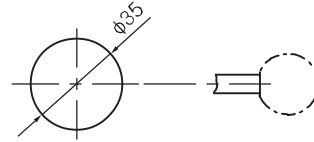


● DIMENSIONS(mm)

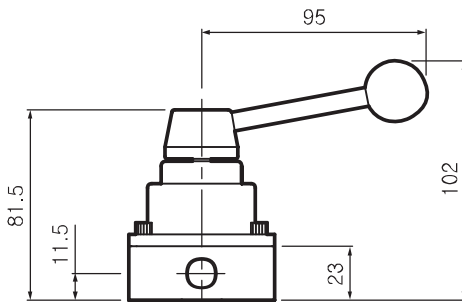
**SHV 200**



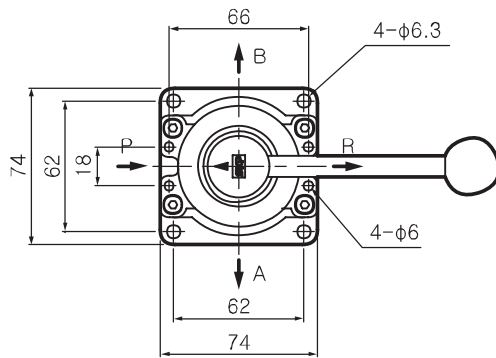
Panel cut dimension



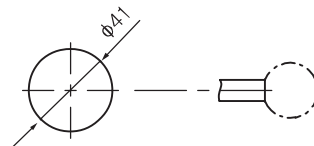
Max. panel thickness 3.5mm



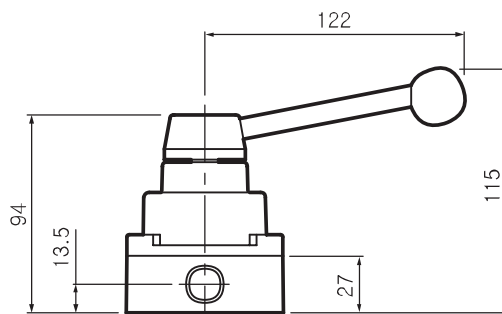
**SHV 300**



Panel cut dimension

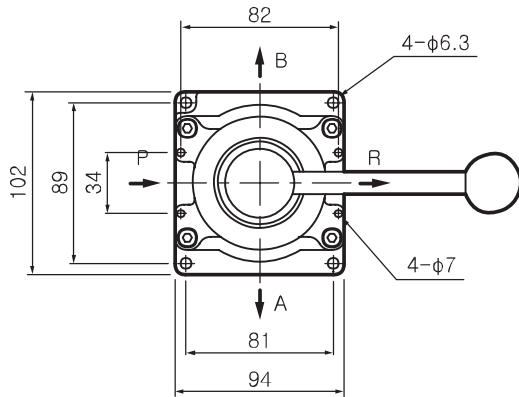


Max. panel thickness 3.5mm

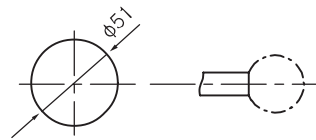


● DIMENSIONS(mm)

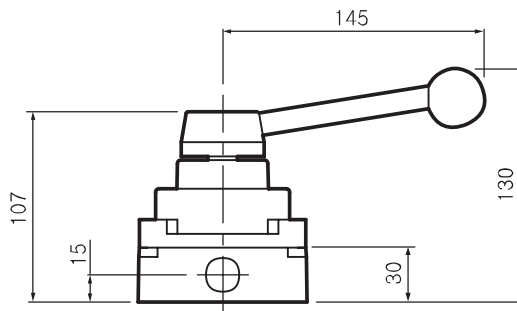
**SHV 400-04**



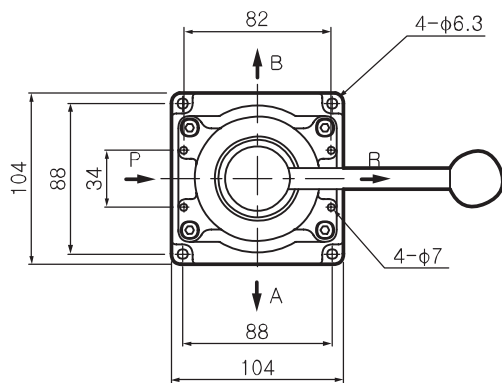
Panel cut dimension



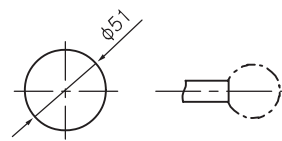
Max. panel thickness 8mm



**SHV 400-06**



Panel cut dimension



Max. panel thickness 8mm

