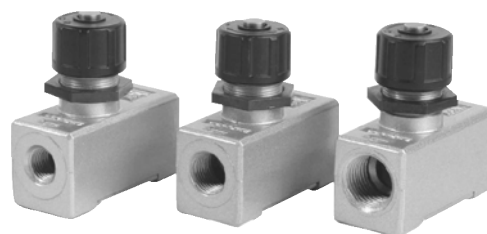


# Speed Controller(AS)



## ◆ SAS Series



SAS4000-02    SAS4000-03    SAS4000-04



SAS2000-01    SAS2000-02

## ● How to order

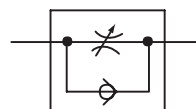
**SAS 2 000 - 02**

1 Speed Controller

2 Body Size  
2 - 1/8, 1/4  
4 - 1/2

3 Port Size  
01 - Rc(PT)1/8"   
02 - Rc(PT)1/4"   
03 - Rc(PT)3/8"   
04 - Rc(PT)1/2"

## ● Symbol



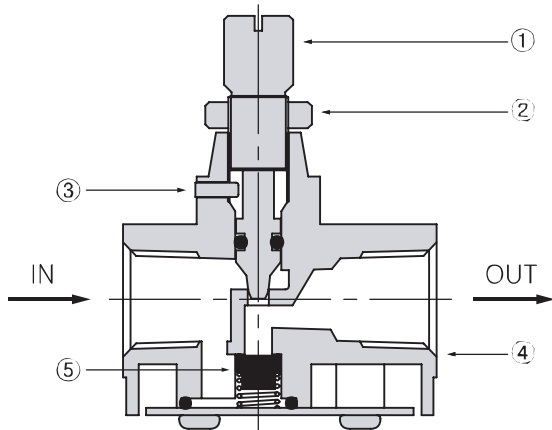
## ● Specification

Fluid		Compressed Air
Max. supply pressure		1.5MPa [15.3 kgf/cm <sup>2</sup> ]
Max. operating pressure		0~0.97MPa [0~9.9 kgf/cm <sup>2</sup> ]
Ambient temperature		5 ~ 60℃
Number of needle rotation		8 turn (10 turn)
Weight(g)	SAS 4000-02	235
	SAS 4000-03	214
	SAS 4000-04	204

**SAS**

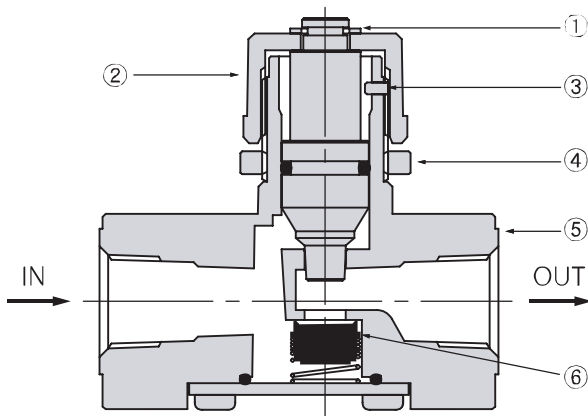
## ● STRUCTURE / PARTS

### SAS 2000



No.	PARTS	MATERIAL
1	Handle	Bs
2	Handle nut	Bs
3	Stopper pin	Bs
4	Body	ZnDC
5	Check valve	NBR

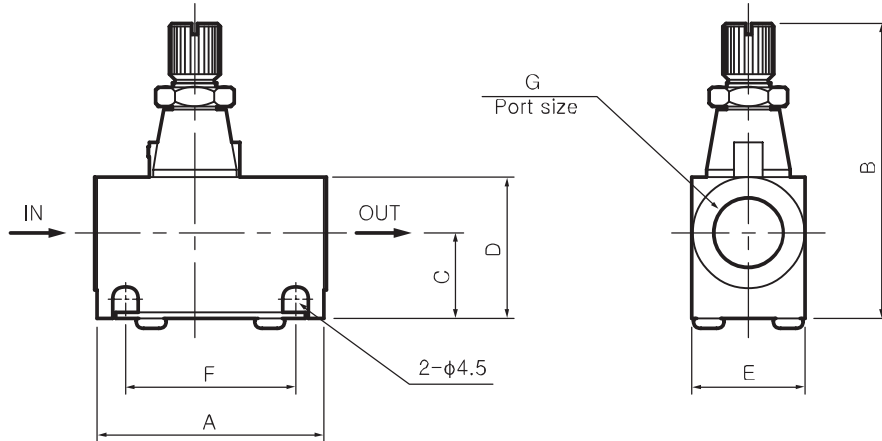
### SAS 4000



No.	PARTS	MATERIAL
1	E-ring	
2	Handle	ZnDC
3	Stopper pin	Bs
4	Handle nut	ZnDC
5	Body	ALDC
6	Check valve	NBR

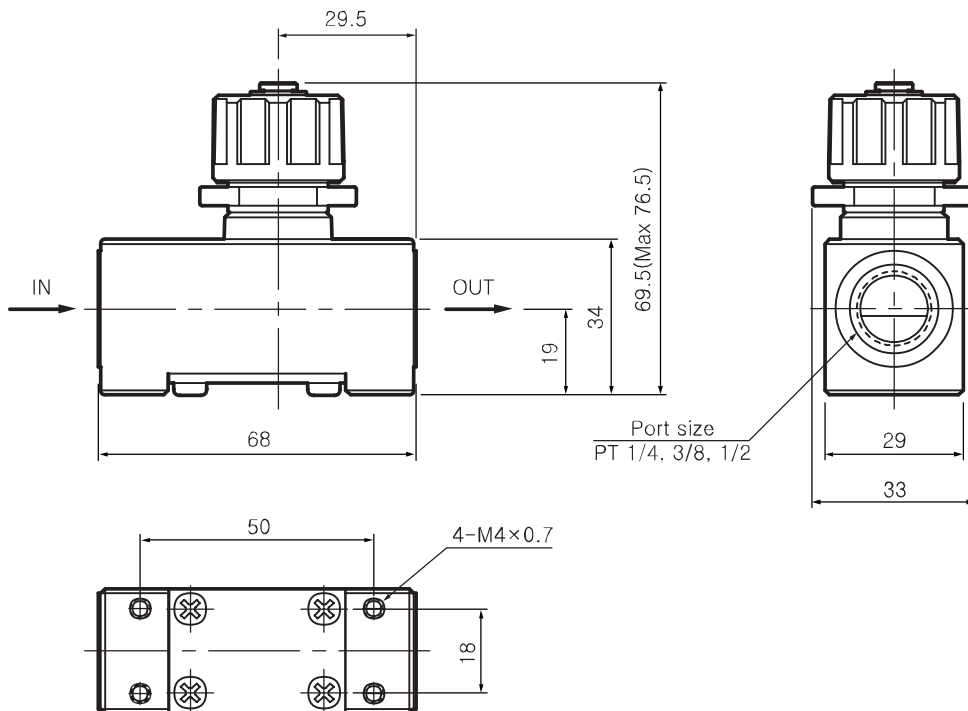
● DIMENSIONS(mm)

## SAS 2000



Model	A	B	C	D	E	F	G
SAS 2000-01	40	51	15	21.5	16	30	PT 1/8
SAS 2000-02	40	53	17	25	20	30	PT 1/4

## SAS 4000



**SAS**