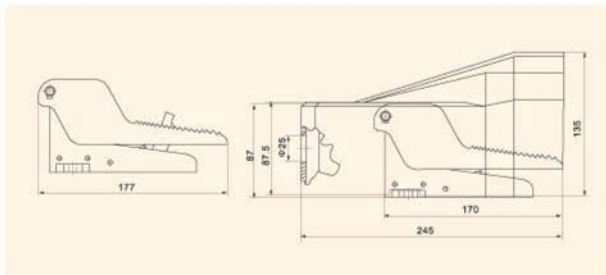


2
Control
equipment



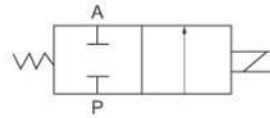
FOV-520

FOV-520AC



Foot valve FOV series

Symbol:



How to order

FOV	-	520	A
Series code		Port size 520: 2/5 way	Nil: fixed type A: self-lock C: fixed & protection cover AC: self-lock & protection cover

Specification

Model	FOV-520	FOV-520A	FOV-520C	FOV-520AC
Fluid	Air (filtered through 40µ filter element)			
Operating pressure	0~8kgf/cm ²			
Ambient & fluid temperature	0~70°C			
Port size	1/4"			
Position	3/2 way		5/2 way	
Weight (kg)				
Main parts material	Body	Zinc alloy		
	Seal	NBR		