

Solenoid valve 2L series (High-temperature type)

2
Control
equipment

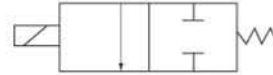


2L170-15



2L200-25

Symbol:



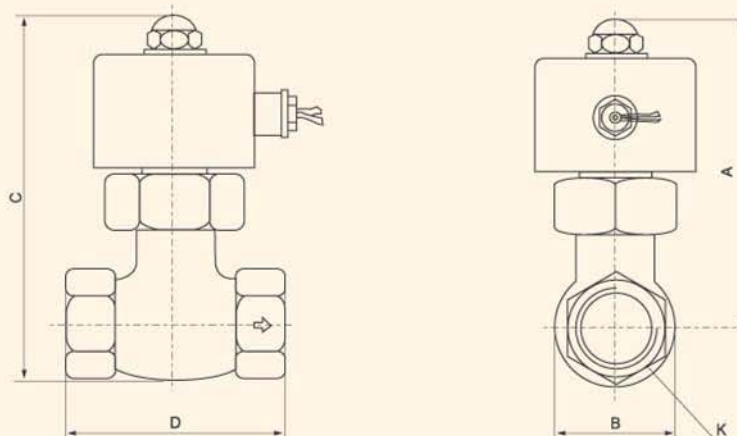
How to order

2L	250	-	20	AC110V
2/2 way	Orifice size 170: 17mm 200: 20mm 250: 25mm 350: 35mm 400: 40mm 500: 50mm		Port size 10: 3/8" 15: 1/2" 20: 3/4" 25: 1" 35: 1 1/4" 40: 1 1/2" 50: 2"	Voltage DC12V DC24V AC24V 50/60Hz AC110V 50/60Hz AC220V 50/60Hz AC380V 50/60Hz

Specification

Model	2L170-10	2L170-15	2L200-20	2L250-25	2L350-35	2L400-40	2L500-50
Fluid	Air, Water, Oil (filtered through 40μ filter element)						
Action	Direct acting type						
Type	Normally closed type						
Effective area (mm ²)	17	17	20	25	35	40	50
CV Value	4.8	4.8	4.8	12	20	20	48
Port size	3/8"	1/2"	3/4"	1"	1 1/4"	1 1/2"	2"
Viscosity limit	Under 20CST						
Operating pressure	1~15kgf/cm ²						
Proof pressure	10kgf/cm ²						
Ambient & fluid temperature	-5~85°C						
Voltage range	± 10%						
Weight (kg)							
Main parts material	Body	Brass					
	Seal	EPDM					

Dimension



Model	A	B	C	D	K
2L170-10	122.4	42	143.4	82	PT3/8"
2L170-15	122.4	42	143.4	82	PT1/2"
2L200-20	122.4	42	143.4	90.5	PT3/4"
2L250-25	130	52	156	111	PT1"
2L350-35	148	74	185	111	PT1 1/4"
2L400-40	147	74	185	111	PT1 1/2"
2L500-50	176	86	223	163	PT2"