

HLV Series

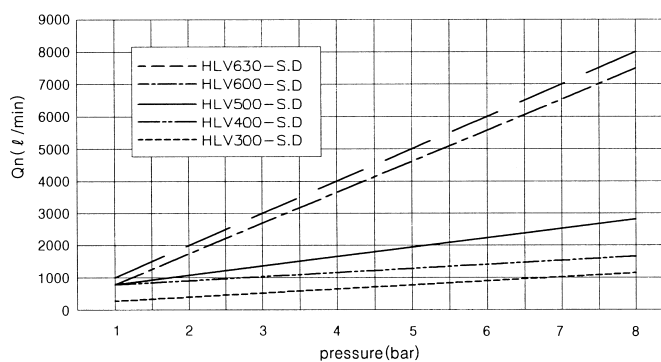
Hand Lever Operated Spool Valves

- Direct Operation Type
- 5/2, 5/3, 3/2
- 1/8, 1/4, 3/8, 1/2
- High Flow Capacity

SPECIFICATION

SERIES	HLV300	HLV400	HLV500	HLV600
ITEM	FUNCTION	5/2, 5/3-Way	5/2, 5/3, 3/2-Way	5/2, 5/3-Way
Fluids	Compressed Air & Inert Gases			
Port Size	1/8	1/4	3/8	1/2
Pressure(bar)	0~8.0			
Eff. Sectional Area(mm ²)-5bar	13.5	18.0	35.0	90.0
Ambient & Fluid Temp.	5~60°C (41~140°F)			
Lubrication	Not Required(Use ISO VG32 #)			

Transition Capacity Graph



The Material of Parts

- Valve Body : Die-Cast Aluminium
- Spool : Aluminium
- Seals : NBR
- Spring : Stainless
- Lever Parts : Steel, NBR, Plastic

※ The specification on each item can be amended without any prenotice to improve a performance.
 ※ The specification on each item can be different from actual specification.

ORDERING NO.

HLV3

1

0

-

S

Valve Series

HLV3:
1/8-Port Body
HLV4:
1/4-Port Body
HLV5:
3/8-Port Body
HLV6:
1/2-Port Body

Function

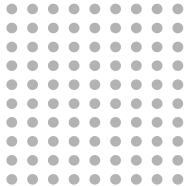
1	5/2 Single
2	5/2 Double
3	5/3 Closed Center
4	5/3 Open Center
5	5/3 Pressure Center
6	3/2 Normally Closed

Port Size & Thread

0	G
1	NPT

Return Method

S	Single Spring Return
D	Double Detented



Manually & Mechanically Actuated Spool Valve

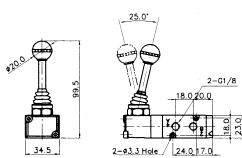
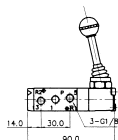
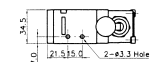
Port Thread 1/8, 1/4, 3/8, 1/2

5/2-Way, Hand Lever Manually Actuated Valve Thread-G1/8

HLV310-S Single



HLV320-D Double

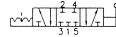


5/3-Way, Hand Lever Manually Actuated Valve Thread-G1/8

HLV330-S Closed Center



HLV330-D Closed Center



HLV340-S Exhaust Center



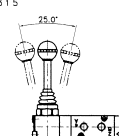
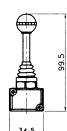
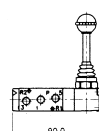
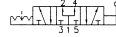
HLV340-D Exhaust Center



HLV350-S Pressure Center



HLV350-D Pressure Center

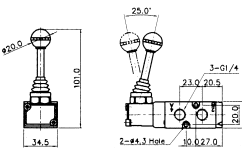
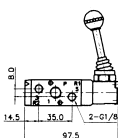
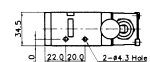


5/2-Way, Hand Lever Manually Actuated Valve Thread-G1/4

HLV410-S Single



HLV420-D Double

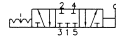


5/3-Way, Hand Lever Manually Actuated Valve Thread-G1/4

HLV430-S Closed Center



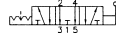
HLV430-D Closed Center



HLV440-S Exhaust Center



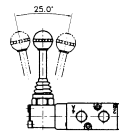
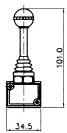
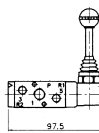
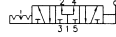
HLV440-D Exhaust Center



HLV450-S Pressure Center



HLV450-D Pressure Center

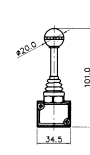
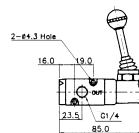
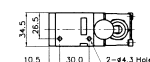


3/2-Way, Hand Lever Manually Actuated Valve Thread-G1/4

HLV460-S Single



HLV460-D Double

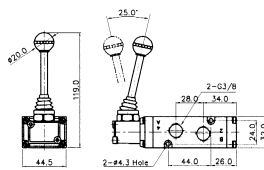
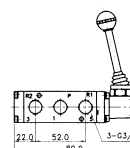
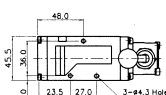


5/2-Way, Hand Lever Manually Actuated Valve Thread-G3/8

HLV510-S Single



HLV520-D Double

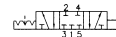


5/3-Way, Hand Lever Manually Actuated Valve Thread-G3/8

HLV530-S Closed Center



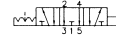
HLV530-D Closed Center



HLV540-S Exhaust Center



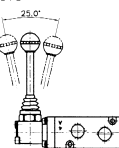
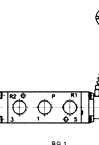
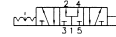
HLV540-D Exhaust Center



HLV550-S Pressure Center



HLV550-D Pressure Center

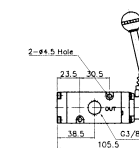
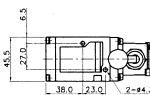


3/2-Way, Hand Lever Manually Actuated Valve Thread-G3/8

HLV560-S Single



HLV560-D Double

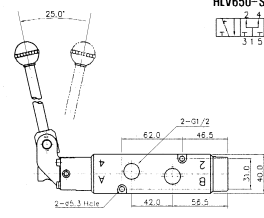
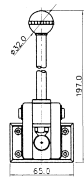
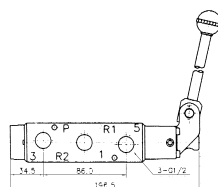
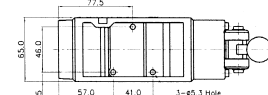


5/2-Way, Hand Lever Manually Actuated Valve Thread-G1/2

HLV610-S Single



HLV620-D Double



5/3-Way, Hand Lever Manually Actuated Valve Thread-G1/2

HLV630-S Closed Center



HLV630-D Closed Center



HLV640-S Exhaust Center



HLV640-D Exhaust Center



HLV650-S Pressure Center



HLV650-D Pressure Center

