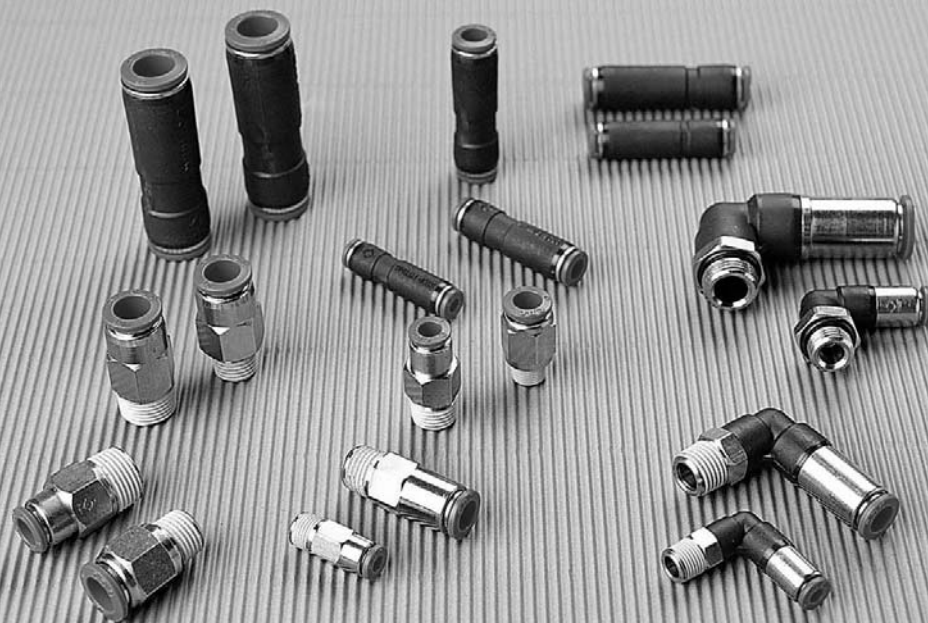


# Stop Fittings



## Fitting Series

- One-Touch Fittings
- Compact One-Touch Fittings
- Speed Controllers
- Hand Valves
- **Stop Fittings**
- Check Valves
- Two-Touch Fittings
- Two-Touch Fittings BSBM

## METRIC-BSPT(R)

**SPC**  
Page 140



**SPL**  
Page 142



**SPU**  
Page 144



## METRIC-BSPP(G)

**SPC-G**  
Page 140



**SPL-G**  
Page 142



# Stop Fitting

## Applications

- Used in the place where pneumatic piping frequently changes.

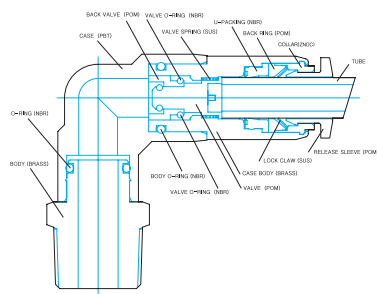
## Features

- Air is completely blocked when the tube is released, and the air flows again only after connection to ensure safety. The air flows only when the tube is connected.

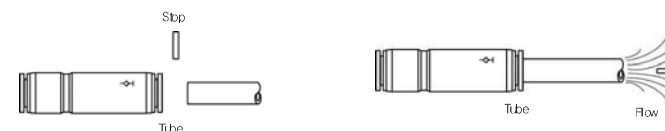
## Specifications

- Fluid type : Air (No other gases or liquids)
- Working pressure : 0~150PSI / 0~9.9Kg<sub>f</sub>/cm<sup>2</sup> (0~990kPa)
- Negative pressure : ~29.5 in Hg / ~750mmHg (~750Torr)
- Working temperature : 32~140° F / 0~60° C
- Applicable Tube : Polyurethane and Nylon

## Structural Diagram



## Control System



## CAUTION

- Be sure to refer to the Caution on Safety, Classification of Warning Indication (P7), and Common Caution of Fitting Products (P8) before use.
- Assemble the fitting according to the proper connection torque value (P7).
- Proper torque refers to connection by hand and 2~3 rotations using a tool. Excessive pressure may damage the screw.
- Confirm the air flow control direction before connecting the tube. If the flow control direction operates backwards, air will not flow.

## WARNING

- Do not force impact or rotation on the body or fitting section.
- Never open the tube under pressure. The springing power of the tube may cause bodily harm.

## Product Code System

### METRIC - BSPT(R)

**SPC 06-01**

STOP FITTING		Tube Dia		Thread Size	
CODE	ØD	CODE	SIZE	CODE	SIZE
04	ø4	M5	M5×0.8		
06	ø6	M6	M6×1.0		
08	ø8	01	R1/8		
10	ø10	02	R1/4		
12	ø12	03	R3/8		
		04	R1/2		

### METRIC - BSPP(G)

**SPC 06 - G01**

STOP FITTING		Tube Dia		Thread Size	
CODE	ØD	CODE	SIZE	CODE	SIZE
04	ø4			G01	G1/8
06	ø6			G02	G1/4
08	ø8			G03	G3/8
10	ø10			G04	G1/2
12	ø12				

### INCH - NPT

**SPC 1/4 - N1**

STOP FITTING		Tube Dia		Thread Size	
CODE	ØD	CODE	SIZE	CODE	SIZE
5/32	5/32"	U	10-32UNF		
3/16	3/16"	N1	NPT1/8		
1/4	1/4"	N2	NPT1/4		
5/16	5/16"	N3	NPT3/8		
3/8	3/8"	N4	NPT1/2		
1/2	1/2"				

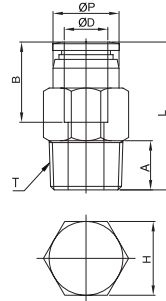
## Stop Fittings

# SPC



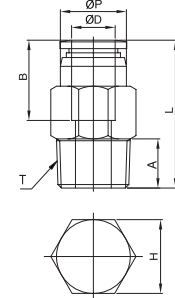
### METRIC-BSPT(R)

MODEL	ØD	ØP	T	L	A	B	H(Hex)	WEIGHT(g)	BOX(B)
SPC 04-01	4	10.0	R1/8	26.1	8.0	15.3	10	108	100
SPC 06-01	6	12.0	R1/8	28.8	8.0	17.0	12	128	100
SPC 06-02			R1/4		10.0	14	14	208	50
SPC 08-02	8	14.0	R1/4	33.3	10.0	18.6	14	197	50
SPC 08-03			R3/8		11.0	17	17	387	50
SPC 10-02			R1/4		10.0	17	17	285	50
SPC 10-03	10	17.0	R3/8	35.6	11.0	20.3	17	335	50
SPC 10-04			R1/2		14.0	21	21	605	50
SPC 12-02			R1/4		10.0	19	19	443	50
SPC 12-03	12	18.8	R3/8	41.9	11.0	22.7	19	583	25
SPC 12-04			R1/2		14.0	21	21	663	25



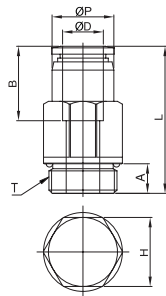
### INCH-NPT

MODEL	ØD	ØP	T	L	A	B	H(Hex)	WEIGHT(g)	BOX(B)
SPC 5/32-N1	5/32	10.0	NPT1/8	26.1	8.5	15.3	7/16	118	100
SPC 3/16-N1	3/16	11.0	NPT1/8	27.2	8.5	16.4	7/16	138	100
SPC 3/16-N2			NPT1/4	27.2	10.5		9/16	218	100
SPC 1/4-N1	1/4	12.7	NPT1/8	29.7	8.5	17.4	1/2	148	100
SPC 1/4-N2			NPT1/4	29.7	10.5		9/16	228	50
SPC 5/16-N1			NPT1/8	33.3	8.5		9/16	187	50
SPC 5/16-N2	5/16	14.0	NPT1/4	33.3	10.5	18.6	9/16	177	50
SPC 5/16-N3			NPT3/8	33.3	11.5		11/16	377	50
SPC 3/8-N2			NPT1/4	36.4	10.5		11/16	294	50
SPC 3/8-N3	3/8	16.7	NPT3/8	37.6	11.5	20.3	11/16	364	50
SPC 3/8-N4			NPT1/2	38.4	14.5		7/8	594	50
SPC 1/2-N3	1/2	20.6	NPT3/8	45.0	11.5	23.0	7/8	621	25
SPC 1/2-N4			NPT1/2	45.0	14.5		7/8	701	25



### METRIC-BSPP(G)

MODEL	ØD	ØP	T	L	A	B	H(Hex)	WEIGHT(g)	BOX(B)
SPC04-G01	4	10.3	G1/8	25.5	5.0	15.5	12	148	100
SPC06-G01			G1/8	27.7	5.0	12	12	138	100
SPC06-G02	6	12.0	G1/4	27.2	6.5	17.0	15	238	50
SPC08-G02			G1/4	31.9	6.5		15	227	50
SPC08-G03	8	14.0	G3/8	31.9	6.5	18.6	17	347	50
SPC10-G02			G1/4	34.9	6.5		17	305	50
SPC10-G03	10	17.0	G3/8	36.4	6.5	20.3	17	355	50
SPC10-G04			G1/2	37.4	8.0		21	575	50
SPC12-G02			G1/4	43.3	6.5		19	493	50
SPC12-G03	12	18.8	G3/8	43.3	6.5	22.7	21	623	25
SPC12-G04			G1/2	43.8	8.0		21	643	25

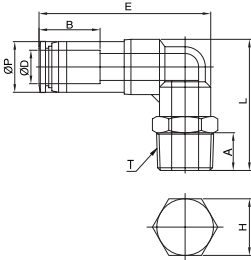


Stop Fittings



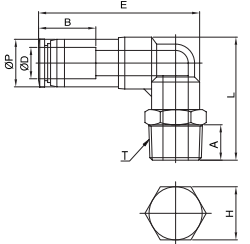
METRIC-BSPT(R)

MODEL	ØD	ØP	T	L	E	A	B	H(Hex)	WEIGHT(g)	BOX(B)
SPL 04-M5	4	10.0	M5×0.8p	27.3		4.6	10	15.8	100	
SPL 04-M6			M6×1.0p	26.9	34.5	4.1	15.3	10	15.8	100
SPL 04-01			R1/8	29.8		8.0		10	19.8	50
SPL 06-M5	6	12.0	M5×0.8p	30.3		4.6		12	19.8	50
SPL 06-01			R1/8	32.8	38.9	8.0	17.0	12	20.8	50
SPL 06-02			R1/4	35.8		10.0		14	30.8	50
SPL 08-01	8	14.0	R1/8	38.2	48.6	8.0	18.6	14	31.7	50
SPL 08-02			R1/4	41.2		10.0		14	38.7	50
SPL 10-02			R1/4	40.3		10.0		17	55.5	25
SPL 10-03	10	17.0	R3/8	41.3	55.0	11.0	20.3	17	65.5	25
SPL 10-04			R1/2	44.3		14.0		21	89.5	25
SPL 12-03		12	R3/8	45.7	63.7	11.0		19	83.3	25
SPL 12-04			R1/2	48.7		14.0	22.7	21	106.3	25



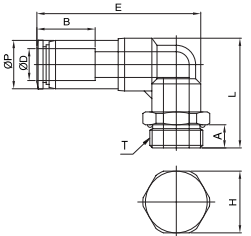
INCH-NPT

MODEL	ØD	ØP	T	L	E	A	B	H(Hex)	WEIGHT(g)	BOX(B)
SPL 5/32-U	5/32	10.0	UNF10/32	26.7		3.5		7/16	15.8	100
SPL 5/32-N1			NPT1/8	30.3	34.5	8.5	15.3	7/16	19.8	50
SPL 3/16-U	3/16	11.0	UNF10/32	27.2		3.5		7/16	19.8	100
SPL 3/16-N1			NPT1/8	30.8	35.4	8.5	16.4	7/16	20.8	50
SPL 3/16-N2			NPT1/4	33.8		10.5		9/16	30.8	50
SPL 1/4-U	1/4	12.6	UNF10/32	32.4		3.5		1/2	22.8	100
SPL 1/4-N1			NPT1/8	34.3	39.2	8.5	17.4	1/2	24.8	50
SPL 1/4-N2			NPT1/4	37.2		10.5		9/16	31.8	50
SPL 5/16-N1	5/16	14.0	NPT1/8	36.7		8.5		9/16	29.7	50
SPL 5/16-N2			NPT1/4	38.7	49.6	10.5	18.6	9/16	36.7	50
SPL 5/16-N3			NPT3/8	39.7		11.5		11/16	47.7	50
SPL 3/8-N2	3/8	17.0	NPT1/4	40.8		10.5		11/16	56.4	25
SPL 3/8-N3			NPT3/8	41.8	56.8	11.5	20.3	11/16	66.4	25
SPL 3/8-N4			NPT1/2	44.8		14.5		7/8	76.4	25
SPL 1/2-N3	1/2	20.0	NPT3/8	47.0	65.8	11.5		3/4	82.1	25
SPL 1/2-N4			NPT1/2	50.0		14.5	23.0	7/8	103.1	25



METRIC-BSPP(G)

MODEL	ØD	ØP	T	L	E	A	B	H(Hex)	WEIGHT(g)	BOX(B)
SPL 04-G01	4	10.0	G1/8	26.8	34.5	5.0	15.3	14	18.8	100
SPL 06-G01			G1/8	29.8	38.9	5.0		14	22.8	100
SPL 06-G02			G1/4	31.8	38.9	6.5	17.0	17	29.8	50
SPL 08-G02	8	14.0	G1/4	37.2	48.6	6.5		17	37.7	50
SPL 08-G03			G3/8	36.7	48.6	6.5	18.6	20	41.7	50
SPL 10-G02			G1/4	31.8	55.0	6.5		17	49.5	50
SPL 10-G03	10	17.0	G3/8	35.8	55.0	6.5	20.3	20	56.5	50
SPL 10-G04			G1/2	37.3	55.0	8.0		24	68.5	25
SPL 12-G03			G3/8	40.2	63.7	6.5		20	71.3	25
SPL 12-G04	12	18.8	G1/2	41.7	63.7	8.0	22.7	24	84.3	25

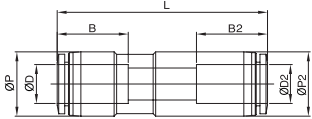


Stop Fittings



METRIC

MODEL	ØD	ØP	L	B	WEIGHT(g)	BOX(PCS)
SPU04	4	10.5	42.1	15.7	6.6	50
SPU06	6	12.5	46.0	17.0	7.4	50
SPU08	8	14.8	53.7	19.1	12.4	50
SPU10	10	17.5	58.2	20.2	21.4	50
SPU12	12	20.5	67.1	22.7	35.2	25



INCH

MODEL	ØD	ØP	L	B	WEIGHT(g)	BOX(PCS)
SPU 5/32	5/32	10.5	42.1	15.7	6.6	50
SPU 3/16	3/16	11.5	43.5	16.4	7.4	50
SPU 1/4	1/4	13.0	46.9	17.4	8.4	50
SPU 5/16	5/16	14.8	53.7	19.1	12.4	50
SPU 3/8	3/8	17.5	58.4	20.3	21.4	50
SPU 1/2	1/2	21.0	67.7	23.0	36.0	25

